



## **PARIS+** **par Art Basel**

**Grand Palais Éphémère  
Booth D19**

**Gilles Aillaud - Alfred Courmes - Robert Devriendt -  
Daniel Dewar & Grégory Gicquel - Jakob Lena Knebl - Philippe Mayaux -  
Michel Parmentier - Ashley Hans Scheirl - Alina Szapocznikow.**

## Exhibited artworks list

### Alina Szapocznikow *Tabu (Taboo)*, 1963

Patinated plaster, inlaid with metal  
41 × 56 × 34 cm (16 1/8 × 22 1/16 × 13 3/8 in)  
Courtesy galerie Loevenbruck, Paris  
Inv. No. : ASCRS236  
**Selling price: 850 000 euros without taxes**

© ADAGP, Paris. Courtesy The Estate of Alina Szapocznikow / Piotr Stanislawski / Galerie Loevenbruck, Paris / Hauser Wirth. Photo Fabrice Gousset, courtesy Loevenbruck, Paris.



### Michel Parmentier *18 février 1968*, 1968

Paint on unstretched canvas  
279 × 245 cm (109 13/16 × 96 7/16 in)  
Courtesy galerie Loevenbruck, Paris  
Inv. No. : MP680218  
**Selling price: 550 000 euros without taxes**

© ADAGP, Paris. The Estate of Michel Parmentier. AMP – Fonds Michel Parmentier, Bruxelles. Courtesy Loevenbruck, Paris. Sotheby's / Art Digital Studio



### Philippe Mayaux *Les cendres de Prométhée*, 2023

Acrylic, lava powder and sand on canvas  
100 × 160 cm (39 3/8 × 63 in)  
Courtesy galerie Loevenbruck, Paris  
Inv. No. : PM230902  
**Selling price: 65 000 euros without taxes**

© ADAGP, Paris.



### Alfred Courmes *Saint Sébastien aux Fléchettes*, 1934

Oil on canvas  
65 × 54 cm (25 9/16 × 21 1/4 in)  
Courtesy galerie Loevenbruck, Paris  
Inv. No. : AC220403  
**Selling price: 65 000 euros without taxes**

© ADAGP, Paris. Fonds Alfred Courmes. Photo Fabrice Gousset, courtesy Loevenbruck, Paris.



## Exhibited artworks list

**Gilles Aillaud**

*Lamantin et salades, 1974*

Triptych. Oil on canvas  
81 × 100 cm chaque (31 7/8 × 39 3/8 in each)  
Courtesy galerie Loevenbruck, Paris  
Inv. No. : GA230401  
**Selling price: 240 000 euros without taxes**

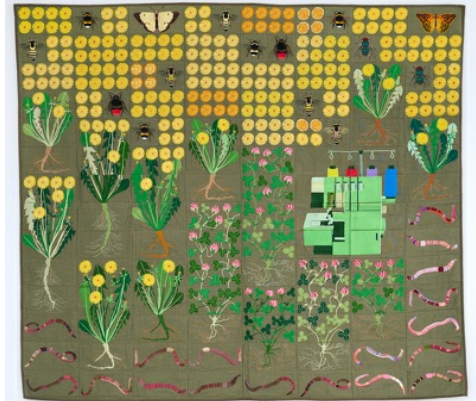


© ADAGP, Paris. Fonds Gilles Aillaud / Archives Galerie de France.  
Photo Fabrice Gousset, courtesy Loevenbruck, Paris.

**Daniel Dewar & Grégory Gicquel**

*Embroidered quilt with worms, dandelion plants, clover plants, white-tailed bumble bees, red-tailed bumble bees, honey bees, green bottle flies, clouded yellow butterfly, silver washed fritillary butterfly and overlocker machine, 2023*

Cotton and polyester thread on linen fabric, cotton batting  
195 × 220 cm (76 3/4 × 86 5/8 in)  
Courtesy galerie Loevenbruck, Paris  
Inv. No. : DDGG230901  
**Selling price: 45 000 euros without taxes**

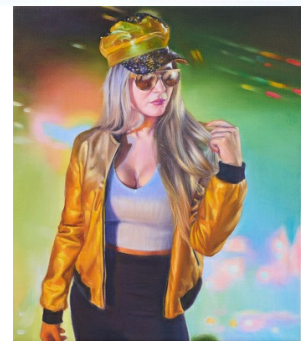


© Daniel Dewar & Grégory Gicquel. Photo Fabrice Gousset, courtesy Loevenbruck, Paris.

**Robert Devriendt**

*The Missing Script, Acteur fétiche, 2023*

Oil on canvas  
18,4 × 15,9 cm (7 1/16 × 5 15/16 in)  
Courtesy galerie Loevenbruck, Paris  
Inv. No. : RD230903  
**Selling price: 12 000 euros without taxes**



© Robert Devriendt. Photo Fabrice Gousset, courtesy Loevenbruck, Paris.

**Ashley Hans Scheirl**

*Call It a Surface, 2022*

Acrylic on canvas  
70 × 100 cm (27 9/16 × 39 3/8 in)  
Courtesy galerie Loevenbruck, Paris  
Inv. No. : AHS170707  
**Selling price: 22 000 euros without taxes**



© Ashley Hans Scheirl. Photo Fabrice Gousset, courtesy Loevenbruck, Paris.



Alina Szapocznikow  
*Tabu* (Taboo), 1963

---

Patinated plaster, inlaid with metal  
41 × 56 × 34 cm (16 1/8 × 22 1/16 × 13 3/8 in)  
Courtesy galerie Loevenbruck, Paris  
Inv. No. : ASCRS236

---

© ADAGP, Paris. Courtesy The Estate of Alina Szapocznikow / Piotr Stanislawski / Galerie Loevenbruck, Paris / Hauser Wirth. Photo Fabrice Gousset, courtesy Loevenbruck, Paris.



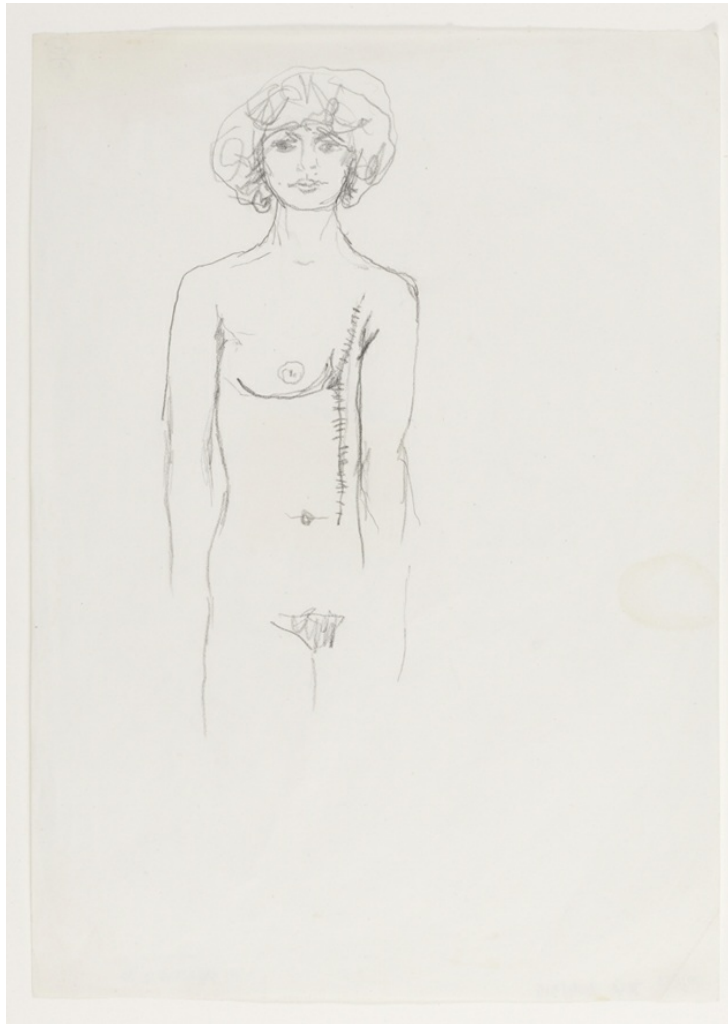






Alina Szapocznikow in her Père-Lachaise's studio, Photo Władysław Stawny.





---

**Alina Szapocznikow**  
***Bez Tytułu* (Untitled), ca. 1971-1972**

---

Pencil on paper

29,5 × 21 cm (11 7/16 × 8 1/4 in)

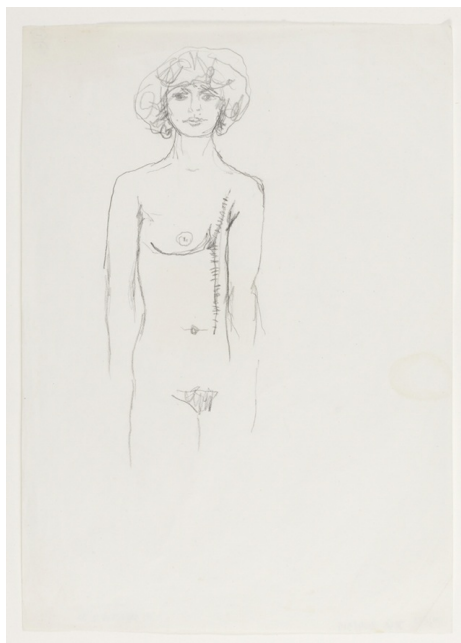
Inscribed in pencil, on the reverse, bottom right: *MS/SN/RYS/D/1570; i.d.*, bottom left: *MS/33*

Courtesy galerie Loevenbruck, Paris

Inv. No. : ASCL591

---

© ADAGP, Paris. Courtesy The Estate of Alina Szapocznikow / Galerie Loevenbruck, Paris / Hauser & Wirth. Photo Fabrice Gousset, courtesy Loevenbruck, Paris.



© ADAGP, Paris. Courtesy The Estate of Alina Szapocznikow / Galerie Loevenbruck, Paris / Hauser & Wirth. Photo Fabrice Gousset, courtesy Loevenbruck, Paris.

## Alina Szapocznikow *Bez Tytułu* (Untitled), ca. 1971-1972

Pencil on paper

29,5 × 21 cm (11 7/16 × 8 1/4 in)

Inscribed in pencil, on the reverse, bottom right: *MS/SN/RYS/D/1570; l.d.*, bottom left: *MS/33*

Inv. No. : ASCL591

**Selling price : 80 000 euros without taxes**

## Exhibitions history

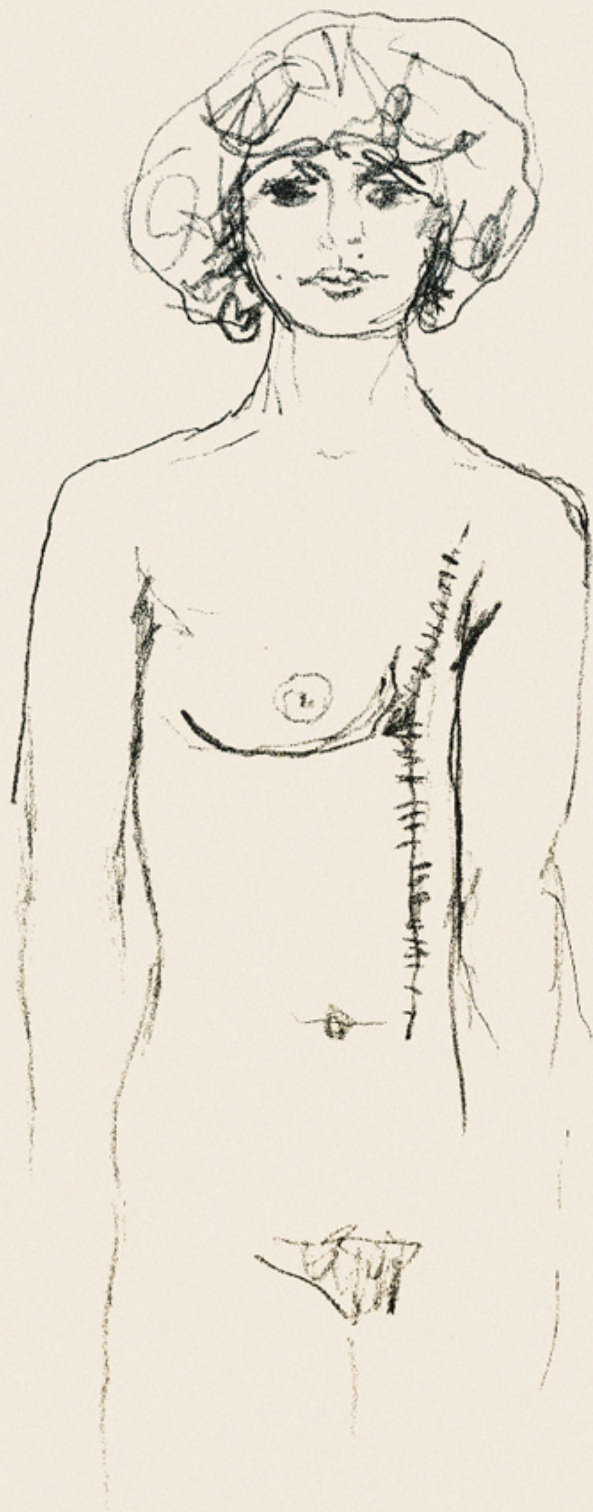
2014	"Alina Szapocznikow: Body Traces"	Tel Aviv Museum of Art (TAMA)	Tel Aviv	IL
		06.02.2014 – 31.05.2014		
2013	"Alina Szapocznikow. Du dessin à la sculpture"	Cabinet d'art graphique, MNAM / Centre Pompidou	Paris	FR
		27.02.2013 – 20.05.2013		
2013	"Art of Memory"	Bonniers Konsthall	Stockholm	SE
		04.09.2013 – 24.11.2013		
2011	"Alina Szapocznikow: Sculpture Undone, 1955-1972"	WIELS Contemporary Art Center	Brussels	BE
		10.09.2011 – 08.01.2012		
		Curated by: Elena Filipovic, Joanna Mytkowska		

---

## Bibliography

---

2014	<i>Alina Szapocznikow / Body Traces</i>	Tel Aviv Museum of Art	Tel Aviv	p. 81
2013	<i>Alina Szapocznikow: From Drawing into Sculpture</i>	Éditions Dilecta / Centre Pompidou	Paris	p. 21
2011	<i>Alina Szapocznikow, Sculpture Undone 1955-1972</i>	WIELS Contemporary Art Center and Mercatorfonds	Brussels	p. 31, n°19
2011	<i>Alina Szapocznikow: Sculpture Undone, 1955-1972</i>	The Museum of Modern Art (MoMA), Mercatorfonds	New York, Brussels	p. 31, n°19
2004	<i>Capturing Life. Alina Szapocznikow - Drawings and Sculptures</i>	Josef Grabski / IRSA	Krakow / Warsaw	p. 279, n°591





---

**Michel Parmentier**  
*18 février 1968, 1968*

---

Paint on unstretched canvas, 7 painted horizontal bands, alternating Ripolin poppy red gloss and white 38 cm wide (4+3) and, at the bottom, 1 partial white band 13 cm wide.

279 × 245 cm (109 13/16 × 96 7/16 in)

Courtesy galerie Loevenbruck, Paris

Inv. No. : MP680218

---

© ADAGP, Paris. The Estate of Michel Parmentier. AMP – Fonds Michel Parmentier, Bruxelles. Courtesy Loevenbruck, Paris. Sotheby's / Art Digital Studio





Michel Parmentier in 1982. Photo Malek Alloula.



Philippe Mayaux  
*Les cendres de Prométhée*, 2023

---

Acrylic, lava powder and sand on canvas  
100 × 160 cm (39 3/8 × 63 in) Courtesy  
galerie Loevenbruck, Paris Inv. No. :  
PM230902

---

© ADAGP, Paris.







Alfred Courmes  
*Saint-Sébastien aux Fléchettes*, 1934

---

Oil on canvas  
65 × 54 cm (25 9/16 × 21 1/4 in)  
Courtesy galerie Loevenbruck, Paris  
Inv. No. : AC220403

---

© ADAGP, Paris. Fonds Alfred Courmes. Photo Fabrice Gousset, courtesy Loevenbruck, Paris.



A. Bourmes  
1934



Alfred Courmes in 1972. Photo Robert Doisneau.



**Gilles Aillaud**  
*Lamantin et salades, 1974*

---

Triptych. Oil on canvas  
81 × 100 cm chaque (31 7/8 × 39 3/8 in each)  
Courtesy galerie Loevenbruck, Paris  
Inv. No. : GA230401

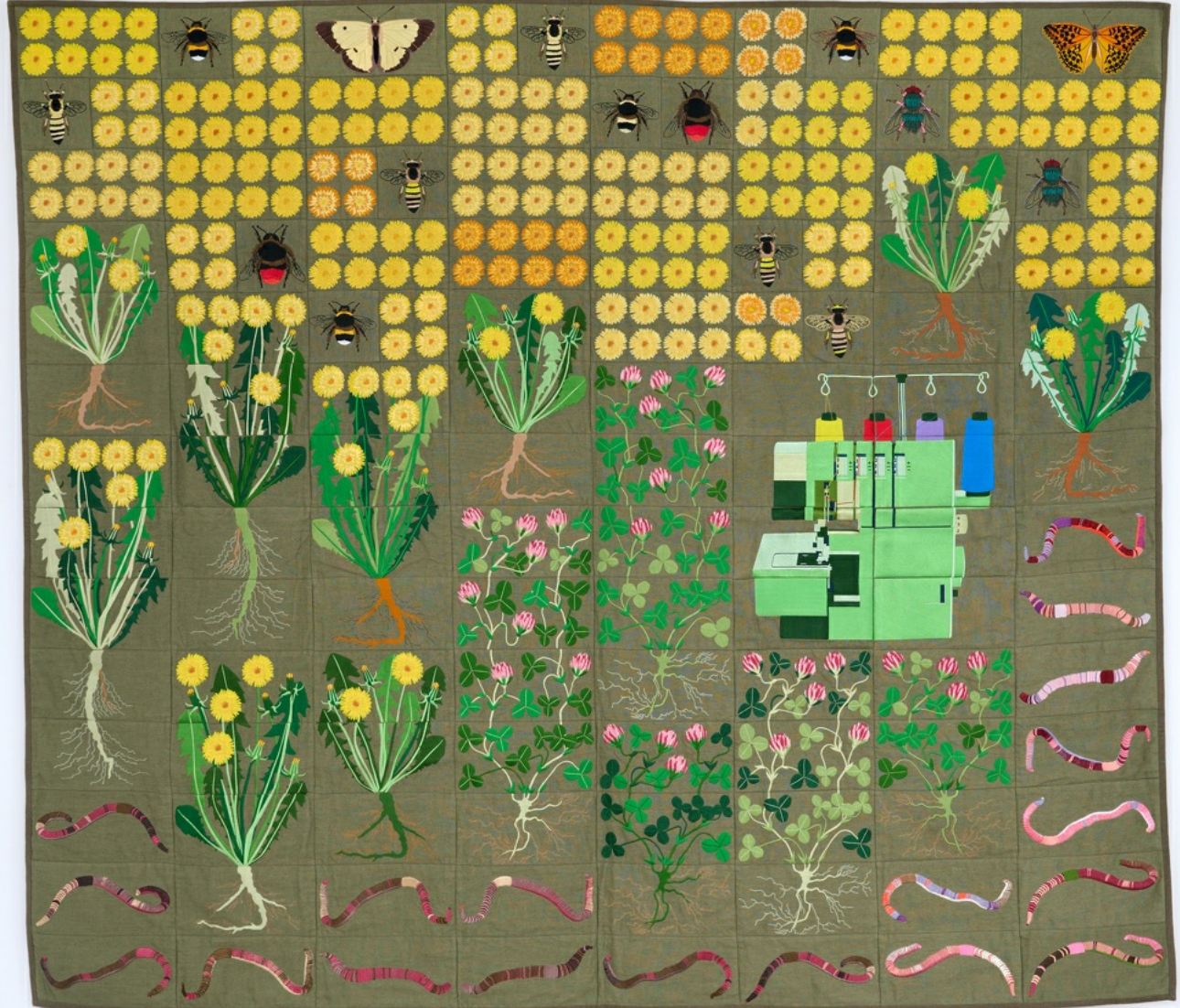
---

© ADAGP, Paris. Fonds Gilles Aillaud / Archives Galerie de France. Photo Fabrice Gousset, courtesy Loevenbruck, Paris.





Gilles Aillaud in 1958.



**Daniel Dewar & Grégory Gicquel**  
*Embroidered quilt with worms, dandelion plants, clover plants, white-tailed bumble bees, red-tailed bumble bees, honey bees, green bottle flies, clouded yellow butterfly, silver washed fritillary butterfly and overlocker machine, 2023*

Cotton and polyester thread on linen fabric, cotton batting  
 195 x 220 cm (76 3/4 x 86 5/8 in)  
 Courtesy galerie Loevenbruck, Paris  
 Inv. No. : DDGG230901

© Daniel Dewar & Grégory Gicquel. Photo Fabrice Gousset, courtesy Loevenbruck, Paris.









Daniel Dewar & Grégory Gicquel. Photo Margaux Nieto.



Robert Devriendt  
*The Missing Script, Acteur fétiche*, 2023

---

Oil on canvas  
18,4 × 15,9 cm (7 1/16 × 5 15/16 in)  
Courtesy galerie Loevenbruck, Paris Inv.  
No. : RD230903

---

© Robert Devriendt. Photo Fabrice Gousset, courtesy Loevenbruck, Paris.





Robert Devriendt. Photo Alex Vanhee.



Ashley Hans Scheirl  
*Call It a Surface*, 2022

---

Acrylique sur toile  
70 x 100 cm  
Courtesy galerie Loevenbruck, Paris  
N° Inv : AHS220903

---

© Ashley Hans Scheirl. Photo Fabrice Gousset, courtesy Loevenbruck, Paris.







Ashley Hans Scheirl. Photo Julia Fuchs.



Man Ray, Galerie surréaliste, vers 1927. © Man Ray 2015 Trust / Adagp, Paris 2023.  
Photo Centre Pompidou, MNAM-CCI, Dist. RMN-Grand Palais / image Centre Pompidou, MNAM-CCI.

## INAUGURAL GROUP SHOW

17.10.2023 – 18.11.2023

GALERIE LOEVENBRUCK

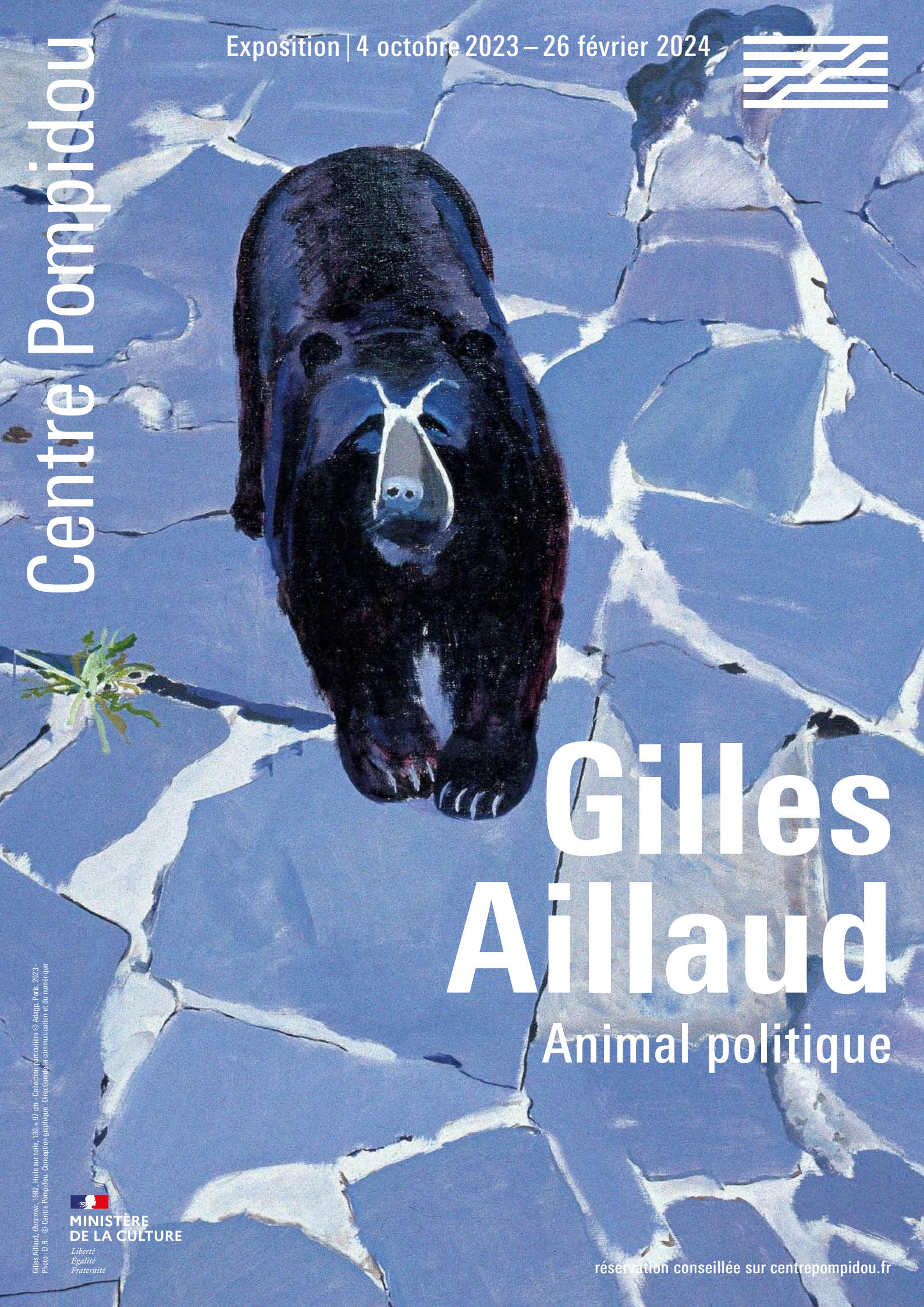
12, RUE JACQUES-CALLOT, 75006 PARIS, FR

GILLES AILLAUD  
ROBERT DEVRIENDT  
DANIEL DEWAR  
& GRÉGORY GICQUEL

OLIVIER MOSSET  
FRÉDÉRIC PARDO  
MICHEL PARMENTIER  
ALINA SZAPOCZNIKOW

Centre Pompidou

Exposition | 4 octobre 2023 – 26 février 2024



# Gilles Aillaud

Animal politique

Gilles Aillaud, *Ours noir*, 1982. Huile sur toile, 130 x 97 cm - Collection particulière © Adapo, Paris, 2023 - Photo: D. B. © Centre Pompidou, Conception graphique: Direction de la communication et du numérique



MINISTÈRE  
DE LA CULTURE

Liberté  
Égalité  
Fraternité

réservation conseillée sur [centrepompidou.fr](http://centrepompidou.fr)

UNE EXPOSITION DE  
**JAKOB LENA  
KNEBL**  
ET  
**ASHLEY HANS  
SCHEIRL**

**Doppelgänger!**

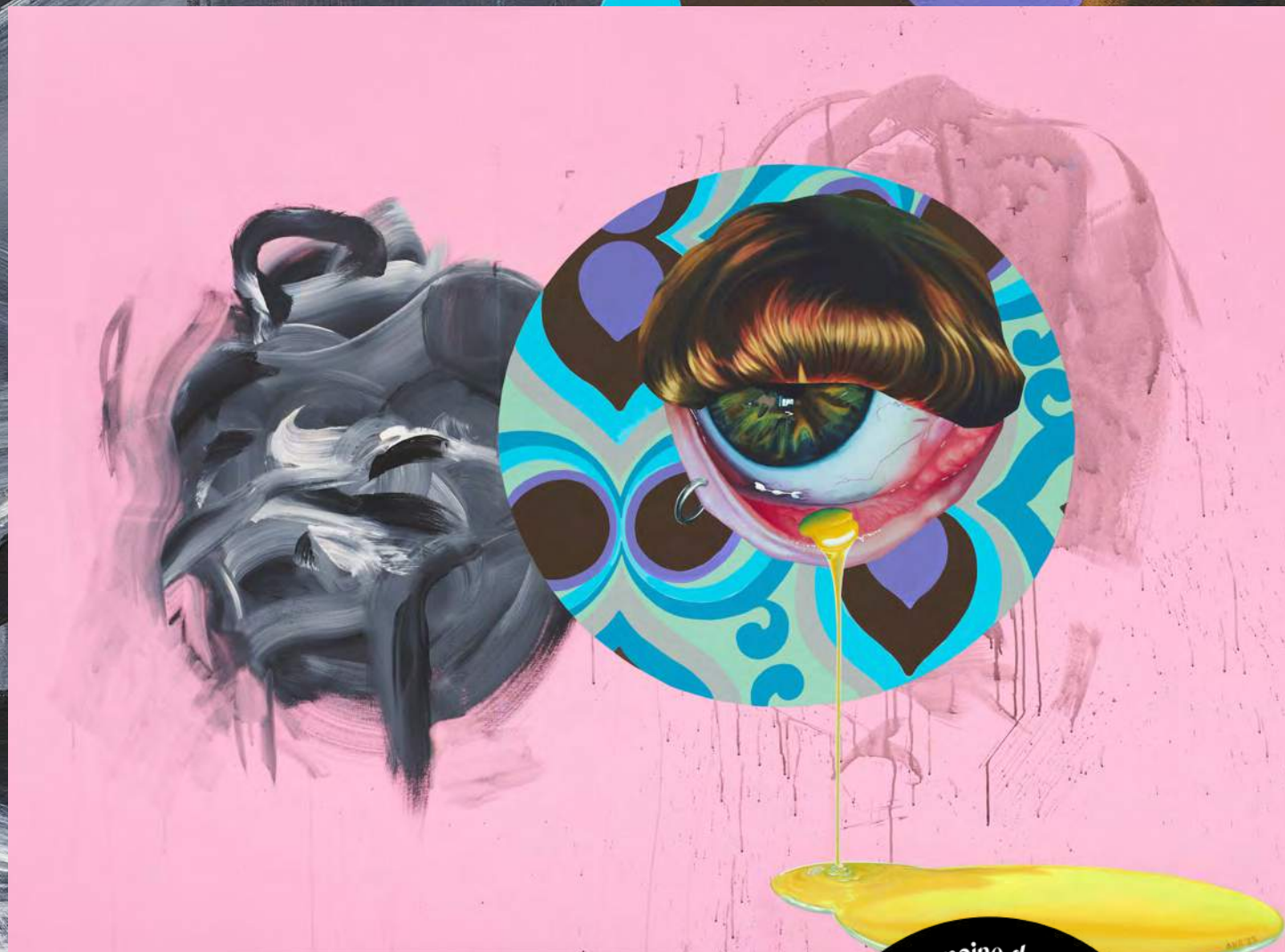
Palais  
de  
Tokyo

## Ashley Hans Scheirl

*L'or dans l'œil*

15.09 – 04.11.2023  
Galerie Loevenbruck, Paris

Starting Sunday  
Sunday 15 October, 2-6pm



La semaine de l'art à Paris  
**Starting  
Sunday**  
À partir du dimanche 15 octobre  
Commence dans les galeries